

Trail Bike Project



INVITATION

*Your attendance to the Official opening of the *Limberlost Trail Bike Visitor Area is requested.*

This visitor area will provide trail bike riders with a place to safely unload their trail bikes and provides facilities such as an information board, picnic tables, toilet and all-weather shelter to help them enjoy their recreation. Located away from residential areas, this site will also minimise past conflict with property owners adjoining State forest.

When - Saturday May 31st, 2008. Official proceedings commence at 12 noon followed by a BBQ lunch.

Guest Speakers

- *Tammy Lobato MP Gembrook*
- *Grange Jephcott, DSE Forest Manager, Gippsland*
- *Richard Wadsworth, DSE Statewide Recreation Manager*
- *Yamaha Representative*
- *Vic Police Representatives*
- *Australian Motorcycle Trail Riders Association*

RSVP appreciated for catering purposes by 26.5.08

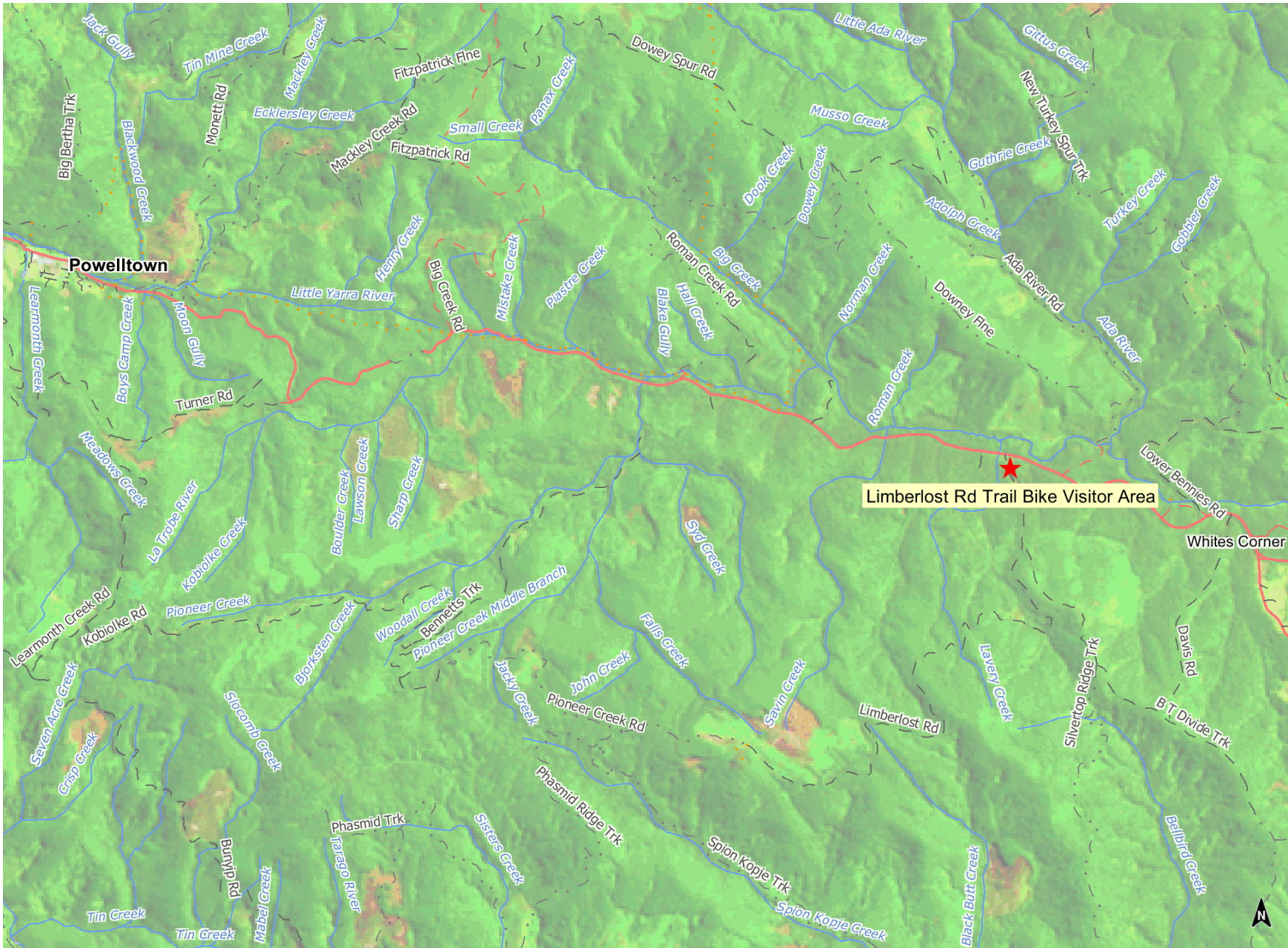
To joy.harte@dse.vic.gov.au or 59.659923

Please state number attending

** Limberlost Rd is on the corner of Powelltown/Noojee Rd.
Vic Roads Map Ref: 80G8 (see over for map)*



Official Opening for Limberlost Road Trail Bike Visitor Area - 12noon Saturday 31st May



ROAD AND TRACK
DETAIL

- Local
 - Local (Unsealed)
 - 2WD
 - 2WD (Unsealed)
 - 4WD Only
 - Proposed
 - Other Track
 - Cycle Track
- ROADS**
- Freeway
 - Highway
 - Arterial
 - Local
 - Local (Unsealed)
 - 2WD
 - 2WD (Unsealed)
- WATERCOURSES**
- Named Watercourse
- WATERBODIES**
- Permanent Waterbody
 - Wetland Area

Disclaimer: This map is a snapshot generated from Victorian Government data. This material may be of assistance to you but the State of Victoria does not guarantee that the publication is without flaw of any kind or is wholly appropriate for your particular purposes and therefore disclaims all liability for error, loss or damage which may arise from reliance upon it. All persons accessing this information should make appropriate enquiries to assess the currency of the data.