

Cheynes Bridge Trail Bike Visitor Area

Situated on the Macalister River on the Licola Road between Heyfield and Licola, Cheynes Bridge Trail Bike Visitor Area and Camping Ground is central to a large network of forest roads and tracks. The area is ideal for trail bike riding and provides riders with a range of facilities to make their riding experience more enjoyable. It is easily accessed via a sealed road from Heyfield.

Location and Access

From Melbourne, follow the Princes Highway to Traralgon. At the eastern end of Traralgon turn left at the Traralgon-Maffra Road intersection and follow all the way through to Heyfield. Once in Heyfield, take the Licola road approximately 27 km north to Cheynes Bridge.

What facilities are provided?

Facilities include:

- Large parking bays accommodating both vehicles and trailers
- A unisex toilet
- Information board
- Signposted riding routes
- Picnic tables and seats

Riding Routes & Safety Information

Loop 1 Mt Margaret 73km (Short Loop 58 km)

This route provides a challenging, scenic ride along a variety of bush tracks. There are many rocky sections and some steep ascents and descents. Sections of track may become slippery following rain.

Loop 2 Black Range 86 km

This loop comprises bush tracks with sections of gravel roads. There are many small river crossings, some rocky sections and a few steep ascents and descents. Sections of track become slippery following rain.

- All roads and tracks, including the sign posted riding routes, are two-way and open to other vehicles.

Ride for Tomorrow

Trail bike riding is great fun, but so you don't spoil the fun of others who come to use the forests, please note the following.

Respect the Environment - Respect Others



DSE and VicRoads have developed some new signs to indicate noise sensitive areas where riders should ride more slowly and quietly. Obeying these signs is voluntary (ie. not a legal requirement), but if riders ride slowly and quietly in these areas, it will help keep the peace and be greatly appreciated by other forest users and nearby residents

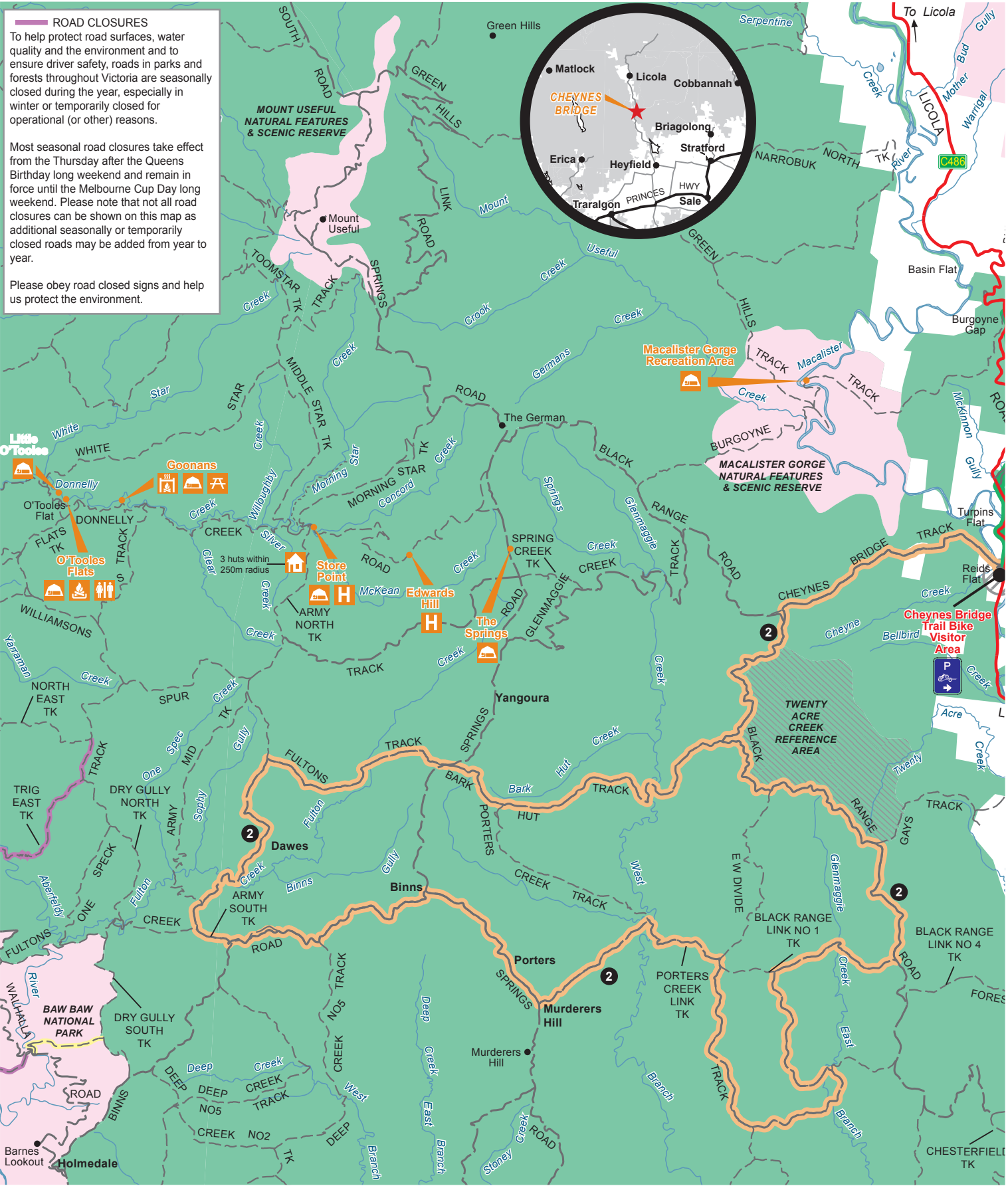
- Refer to map overleaf for key sensitive areas

- Riders must be licensed - motorcycles must be registered
- Ride Legal - Stay on Forest Roads
- Take your litter home

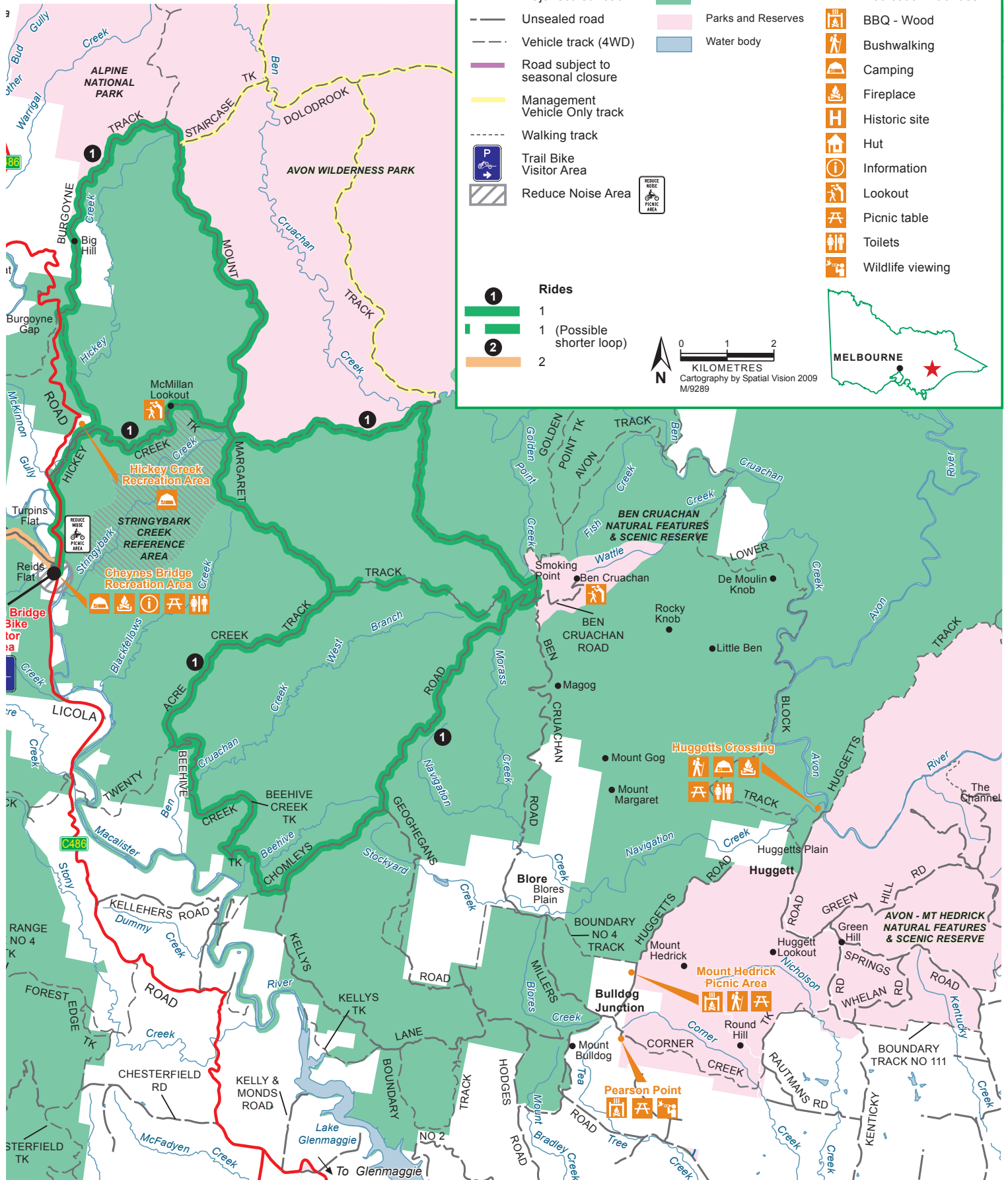
For more information

The Department of Sustainability and Environment (DSE) is responsible for managing Victoria's State Forest. For further information contact DSE's Customer Service Centre on 136 186 (TTY: 1800 122 969) or visit <http://www.dse.vic.gov.au/trailbikes>

This publication may be of assistance to you but the State of Victoria and its officers do not guarantee that the publication is without flaw of any kind or is wholly appropriate for your particular purposes and therefore disclaims all liability for any error, loss or other consequence which may arise from you relying on any information in this publication.



Cheynes Bridge Trail Bike Visitor Area



This publication may be of assistance to you but the State of Victoria and its officers do not guarantee that the publication is without flaw of any kind or is wholly appropriate for your particular purposes and therefore disclaims all liability for any error, loss or other consequence which may arise from you relying on any information in this publication.